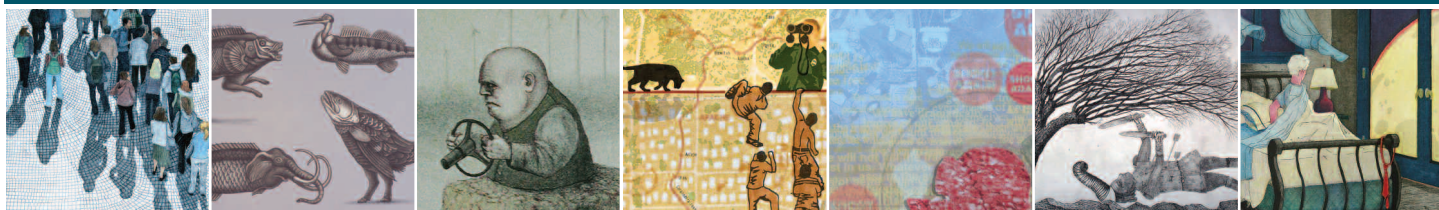




CALL FOR ENTRIES



Boston Printmakers 2011 North American Print Biennial Juror: Jim Dine

Jim Dine is a well-known contemporary painter and printmaker. He is associated with two prominent movements in American Art—as a creator of *Happenings* with Allan Kaprow, Claes Oldenburg, and Robert Whitman and with the development of Pop art in the early 1960s. He has had a major retrospective at the Whitney Museum of American Art, a print retrospective at the Museum of Modern Art, and many solo museum exhibitions in Europe and the United States. The Museum of Fine Arts, Boston is the home of an extensive Jim Dine print archive, a promised gift of the artist.

Site

The exhibition will take place at The Danforth Museum of Art, Framingham, MA

Calendar

May 21, 2010	Applications open at http://www.callforentry.org
September 21, 2010	Final application submission date
October 20, 2010	Notifications e-mailed
Friday, January 7, 2011	Accepted work due if shipped
Saturday, January 8, 2011	Accepted work due if hand delivered
Sunday, February 27, 2011	Opening Reception and events
Sunday, May 1, 2011	Exhibition closes

Prizes

Over \$10,000 is available in juror-designated purchase and materials prizes. In addition, this show generates a large number of sales through Patron purchases. The Boston Printmakers' Purchase awards go into permanent collections at The Museum of Fine Arts, Boston, The Art Complex Museum in Duxbury, MA and The Boston Public Library Print Collection.

Entry

All artists in North America are eligible to enter.

Original works in all printmaking media including monoprints and monotypes, books and mixed media; digital and three-dimensional prints are eligible. We will not consider photographs, offset reproductions, or reproductions of artwork originally produced in another medium. Submitted work may not have been exhibited in any other Boston Printmakers exhibition.

Entry Procedure

Entries will require digital images submitted online.

We have chosen the caFE system of the Western States Art Federation to receive and process all entries. There will be no slides or paper applications. Artists may submit up to **three** digital images of original prints completed in the past two years.

To enter, log on to <http://www.callforentry.org> and follow their free registration instructions. Then go to “**First-time Users Click Here to Register**”. To learn more before you register, click “**Image Prep**” for a detailed explanation and complete instructions on requirements

for the preparation of images. Once registered, click on “**Apply to Calls**” for the listing, *Boston Printmakers: 2011 North American Print Biennial* for information and the application. Click on “**My Images**” to upload the images for submission. For further help, click on “**Questions**”. If not answered, contact The Boston Printmakers at exhibitioninfo@bostonprintmakers.org with your name and telephone number. Once registered, artists can store images with CaFE and submit to other calls. Accepted artists will be invited to send their chosen work. The juror may decline any print that is not accurately represented by its image. Online digital submissions are to the advantage of all applicants, as the juror will be able to enlarge work to see detail and technique. If you do not have digital images of your work, simply take your slides to your photo center. Ask provider to produce a CD with JPEG images in a square 1920 x 1920 pixel format (see Digital Imaging under “Questions” at <http://www.callforentry.org>). The process is not expensive and can usually be completed while you wait.

To Apply

Go to <http://www.callforentry.org>

Retain for your files:

- Due dates
- Images and titles of work submitted
- Copy of your entry form

Entry Fee

\$30 US Members of The Boston Printmakers with coupon code

\$40 US Non-Members

The fee is non-refundable and entitles the artist to submit up to 3 works. You will be directed through the payment process by the online program and may pay by credit card online or by check or money order payable to the Boston Printmakers and mailed to: *The Boston Printmakers Biennial, c/o Ky Ober—Treasurer, 88 Oxford Street, Arlington, MA 02474.*

Sales

A **35%** commission will be charged on all sales and Patrons’ selections. No commissions will be taken on purchase prizes. Artists must assume the expense and responsibility of supplying to purchasers any additional prints which may be sold. The Boston Printmakers is a non-profit organization that uses proceeds from commissions for exhibition expenses.

Responsibility

Every precaution will be taken in handling entries. The Danforth Museum will assume responsibility for those works chosen for exhibition while on view. The Boston Printmakers assumes no responsibility in case of loss or damage to submitted or accepted works.

Catalogue

A catalogue will be sent to all accepted artists. Our catalogue illustrates the entire exhibition and includes a statement by the juror.

Shipping

Work accepted for final jurying must be sent prepaid with Plexi (please use a fresh pane of Plexi with protective covering removed), hinged window mat, and foamcore backing board, all cut to the same size and slipped into a clear plastic bag. Within this package, your print must be securely mounted to the mat or backing board. The window mat must be 3-4 inches wide, and must be white or off-white. Please note that where appropriate due to size or aesthetics, these directions may be amended, i.e. in pieces that cannot be matted. In that case, special hanging instructions must be included (please be explicit). With your acceptance you will receive standard labeling forms to be attached to the upper right corner of the foamcore backing board.

Work must be shipped in a reusable cardboard container and packing should conform to postal regulations. Prints will be returned to the return address on the box. Accepted artists are responsible for return shipping. The Boston Printmakers endeavors to keep artists’ costs as low as possible and charges fees only as necessary to cover exhibition expenses. If you are accepted into the show, you will be asked to send a check to cover the return shipping. If your work sells, we will return this to you with your payment.

Agreement

Sending an entry to this exhibition constitutes an agreement on the part of the entrant to all conditions set forth in this prospectus. The Boston Printmakers reserves the right to reproduce work in the exhibit for our catalogue, promotional or educational purposes, and to show accepted work on our web site.

For Further Information

Website: www.bostonprintmakers.org

Email: exhibitioninfo@bostonprintmakers.org

This prospectus may be downloaded at www.bostonprintmakers.org and reproduced as needed.